



PET PREFORM SPECIFICATIONS SHEET

DATE: Feb 12 th, 16
REFERENCE: PRE-KX-01
MADE BY: PET LABORATORY
REV: "O"

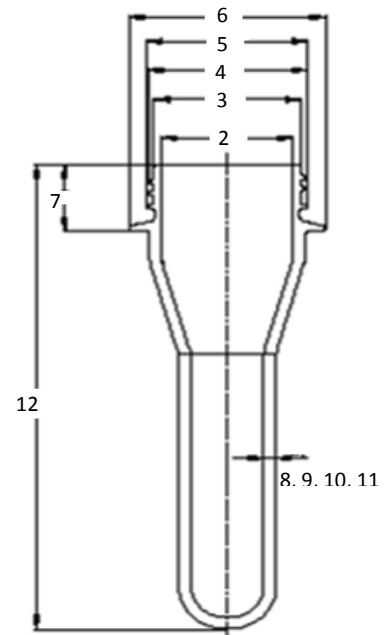
TECHNICAL SHEET: 9.9 CSN26 PREFORM

PREFORM: 9.9	FINISH: CSN26	COLOR: WITHOUT COLOR, PIGMENTED, CLEAR, OR OPAQUE
COMPOSITION:	PET RESIN (POLYETHYLENE TEREPHTHALATE) WITH OR WITHOUT PIGMENT	
INTENDED USE:	MANUFACTURE OF PACKAGING	
PACKING:	GAYLORD CONTAINER (CARTON BULK BOX), STRAPPED AND LABELED, POLYETHYLENE INNER LINER.	PIECES PER BOX: 23,184
STORAGE:	DO NOT EXPOSE THE BOX TO MOISTURE, UV RAYS, AVOID BRUSH MOVEMENTS KEEP IN CLEAN PLACE, WITHOUT DUST.	

QUALITY LABORATORY TESTS: WEIGHT, DIMENSIONAL ANALYSIS, ACETALDEHYDE AND INTRINSEC VISCOSITY.

DIMENSIONS:

No.	CHARACTERISTIC	UNITS	SPECIFICATIONS	
			MIN	MAX
1	WEIGHT	g	9.70	10.33
2	CONTROL DIAMETER AT TOP OF FINISH	mm	21.61	21.87
3	THREAD ROOT DIAMETER	mm	24.08	24.38
4	THREAD CREST DIAMETER	mm	25.85	26.15
5	TAMPER EVIDENT BEAD DIAMETER	mm	26.53	26.83
6	SUPPORT LEDGE DIAMETER	mm	31.85	32.15
7	HEIGHT FROM SUPPORT LEDGE	mm	11.70	12.00
8	THICKNESS 1	mm	1.91	2.17
9	THICKNESS 2	mm	1.91	2.17
10	THICKNESS 3	mm	1.91	2.17
11	THICKNESS 4	mm	1.91 <td 2.17	
12	TOTAL PREFORM HEIGHT	mm	73.36	74.36



NOTE: THICKNESS 1, 2, 3 Y 4 ARE 90° EACH OTHER.
HEIGHT FROM SUPPORT LEDGE = HEIGHT OF FINISH